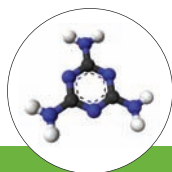


Melamine Analyzer

Ensure confidence in your food products



As a result of adulteration of food by melamine, the U.S. Food and Drug Administration (FDA) developed guidelines for screening of protein materials in foodstuffs.

Melamine is a non-protein rich and inexpensive nitrogen source that can falsely elevate protein-content measurements. Previous techniques were unable to detect the contamination by melamine.

Melamine analysis is becoming a necessity in the food industry in order to verify the quantity and authenticity of protein.

In collaboration with a U.S. FDA-certified independent testing laboratory, Flora Research Laboratories, PerkinElmer developed a new analyzer for the determination of melamine and related compounds – the EcoAnalytix™ **Melamine Analyzer**.

Does your lab need melamine analysis?

Are you a:

- Importer of food additives?
- Independent testing lab?
- Processed-food manufacturing company?
- Functional-food manufacturer?

Is your final product a protein-rich food or a dietary supplement?

Do you use wheat gluten, whey or soy protein?

► If you answered “YES” to any of these questions, the EcoAnalytix Melamine Analyzer is for you.

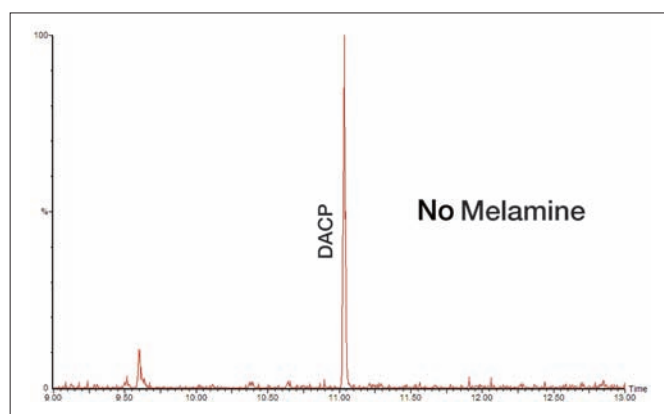


Figure 1. Chromatogram of dry-protein material not exhibiting melamine or analogue-compound adulteration.

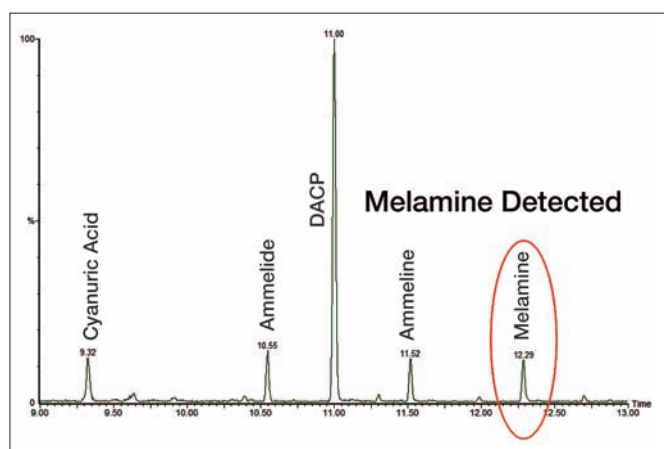


Figure 2. Standard chromatogram of melamine and analogue compounds spiked at 0.1 µg/mL.

Verify the quantity and authenticity of protein in your food products with the PerkinElmer® EcoAnalytix **Melamine Analyzer**. This is the **first complete solution** on the market for this application using GC/MS technology and includes everything your laboratory needs for rapid ramp-up and easy analysis:

- Clarus® 600 T GC/MS with PSS injector and liquid autosampler
- TurboMass™ GC/MS software
- All consumables needed for analysis
- Melamine application CD

The application CD includes methods, example data, an application note, an application guide-book and a library of derivatized-compounds spectra. The custom spectral library was generated with a Clarus MS and is currently unavailable on commercial spectral packages.

Part No.	Description
N6570200	Melamine Analyzer 120V 20 AMP
N6570202	Melamine Analyzer 220V 15 AMP

Gas Chromatograph:	PerkinElmer Clarus 600 GC		
Analytical Column:	Elite-5ms (30 m x 0.25 mm x 0.25 µm)		
Oven Program:	Temperature	Hold Time	Rate
	100 °C	1 min	10 °C/min
	210 °C	1 min	30 °C/min
	300 °C	10 min	End
Mass Spectrometer:	PerkinElmer Clarus 600 T MS		
Full-Scan Range:	50-450 u		



Find out how your laboratory can verify and authenticate your food products. View the Application Note and Webcast at www.perkinelmer.com/melamine

PerkinElmer, Inc.
940 Winter Street
Waltham, MA 02451 USA
Phone: (800) 762-4000 or
(+1) 203-925-4602
www.perkinelmer.com



For a complete listing of our global offices, visit www.perkinelmer.com/lasoffices

©2008 PerkinElmer, Inc. All rights reserved. The PerkinElmer logo and design are registered trademarks of PerkinElmer, Inc. Clarus and PerkinElmer are registered trademarks and EcoAnalytix and TurboMass are trademarks of PerkinElmer, Inc. All other trademarks not owned by PerkinElmer, Inc. or its subsidiaries that are depicted herein are the property of their respective owners. PerkinElmer reserves the right to change this document at any time without notice and disclaims liability for editorial, pictorial or typographical errors.